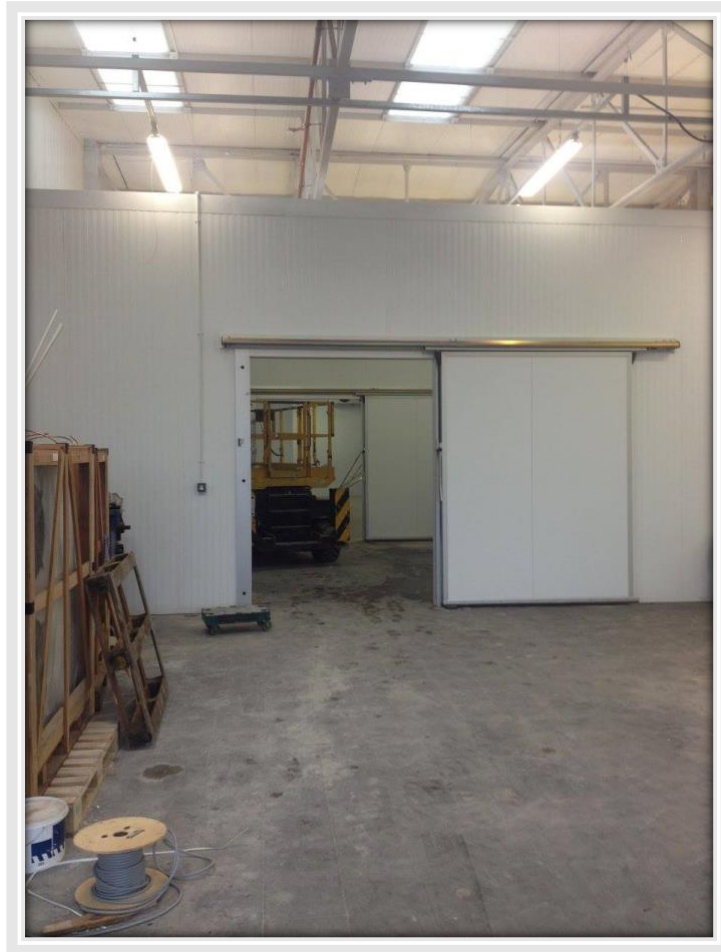


Location:
Manchester

Time scale:
12 weeks

Size:
350m²

Contract value:
£180k+



MCC Projects converted warehousing unit into a frozen and chilled facilities where meat is distributed for sale to the retail and food service industry. This was a particular unusual installation as the client wanted to maximise height within the refrigerated areas, which required us to carry excavation of pre-existing concrete flooring and re-lay a new heated and insulated concrete floor to the freezer area.

Work included installation of insulated panels to form chilled and frozen area, electrical and mechanical services including new refrigeration equipment. As well as ground works in order to maximise the height on frozen and chilled distribution areas.

[Discover how MCC Projects approach can benefit your next project by calling us today](#)